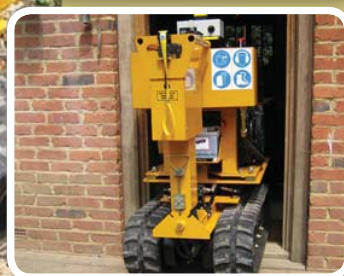


# 28



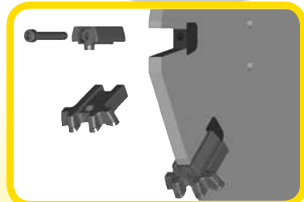
Extremely fast and powerful, yet amazingly versatile and compact range of stumpgrinders

Specification:

Engine	Lombardini 9LD 28 HP, 20.8kW
Length	2440mm
Width (tracks in/out)	670/1000mm
Height	1500mm
Weight	1000Kg
Fuel/Capacity	Diesel/20L
Cutting Depth	380mm
Cutting Height	800mm
Slew	1140mm
Cutter Head Dia.	480mm
Multi-Tip Teeth No.	6

## POWERFUL COMPACT

- Very compact and versatile
- Fully hydraulic
- Low centre of gravity
- Wheel stops in 1.5 seconds
- Easy, quick maintenance
- Designed specifically for the European



Fitted with **MULTITIP** quick change tooth system as



Call today for more information  
**+44 (0)845 402 1756**

[www.predator-mfg.com](http://www.predator-mfg.com)

Predators policy is one of constant improvement, specifications might change without prior notice. All quoted prices are excluding VAT and subject to