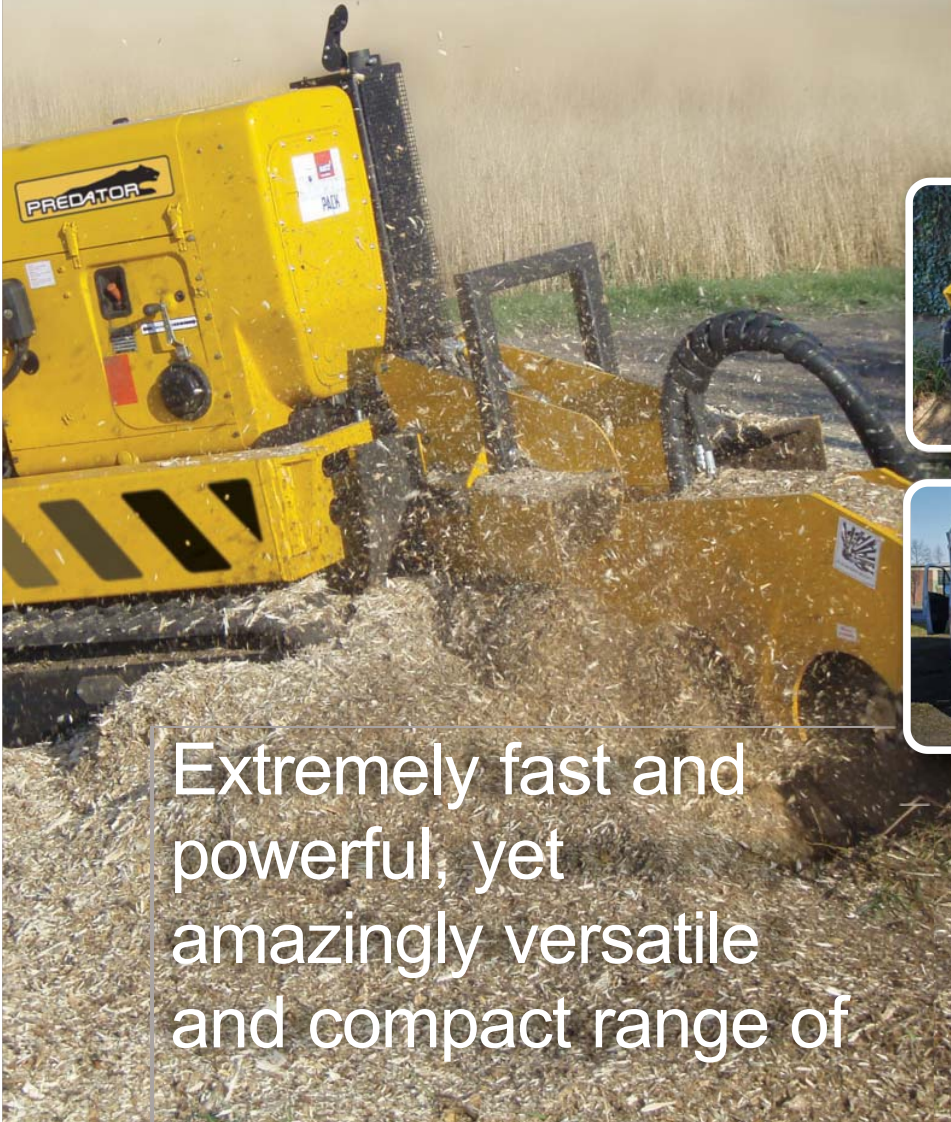


75R



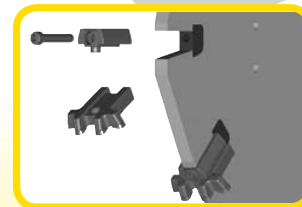
Extremely fast and powerful, yet amazingly versatile and compact range of

POWERFUL COMPACT

Specification:

Engine	Hatz 4L41C 75hp, 55kW
Length	3100mm
Width (tracks in/out)	890/1180mm
Height	1450mm
Weight	2000Kg
Fuel/Capacity	Diesel/30L
Cutting Depth	680mm
Cutting Height	680mm
Slew	1750mm
Cutter Head Dia.	710mm Multi-
Tip Teeth No.	10
Start	Electric

- Remote control - increased visibility, safety and control • Very compact and versatile
- Fully hydraulic
- Low centre of gravity
- Wheel stops in 1.5 seconds
- Easy, quick maintenance



Fitted with **MULTITIP** quick change tooth system as



Call today for more information
+44 (0)845 402 1756

www.predator-mfg.com